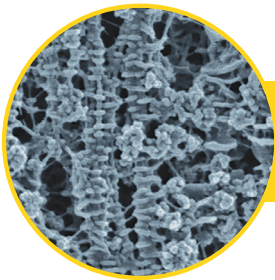


BreathTech® Vapor Permeable Membrane

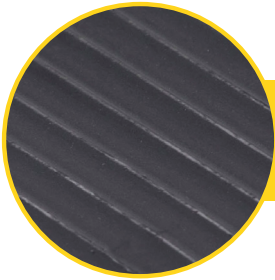
BreathTech®, a vapor permeable membrane, advances the capabilities of the building envelope through very high permeability, ultrahigh water holdout, and UV stability.

From Polypore International, LLC, a global manufacturing leader of battery membranes, BreathTech® is a highly engineered, paradigm shifting material for the building industry.

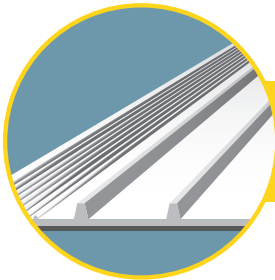
KEY FEATURES



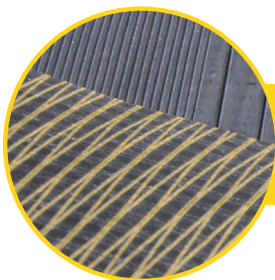
Unique
Pore Structure



Polymeric
Membrane



Customizable &
Integrated Profile Design



Lamination and
Coating Capable

BENEFITS

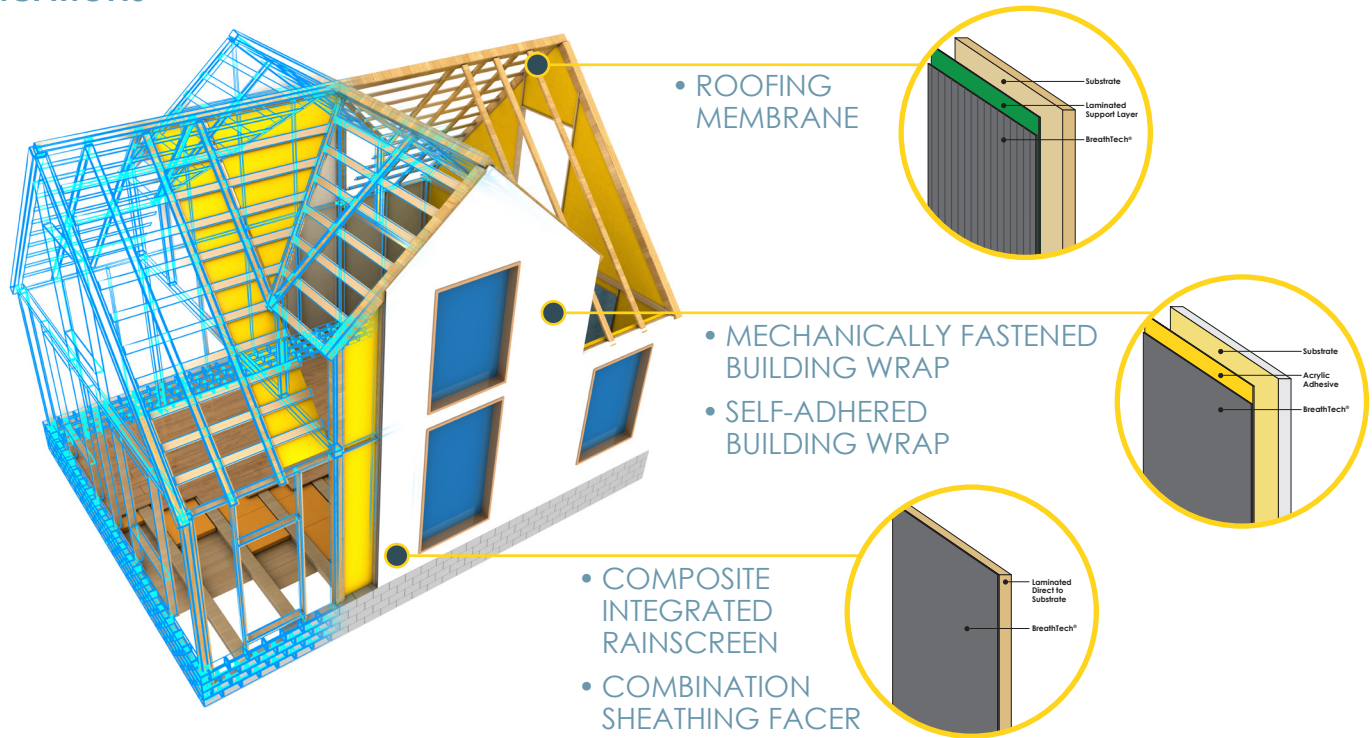
- Promotes vapor transfer allowing moisture to escape
- Ultrahigh water holdout properties fight against water intrusion

- Maintains properties after months of UV exposure
- Tough barrier film for efficient installation



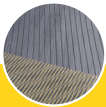
- Profile channels can support drainage
- Profile patterns can support slip resistance for safer installations

- Highly bondable composition allows thermal and adhesive lamination for multi-layer structures
- Highly porous material supports full coating of adhesive or attachment of other substrates while still maintaining breathability (permeability)

APPLICATIONS



KEY PROPERTIES

Typical Properties	Test Method	Units	 BreathTech® KR	 BreathTech® KM	 BreathTech® KM-N*
Thickness	AC38-2016	mm	0.390	0.170	0.250
Basis Weight	AC38-2016	g/m ²	150	25	75
Water Resistance					
Non-Aged	AATCC-127	cm	1500	300	980
Aged**	AATCC-127	cm	1500	300	980
Permeability					
Non-Aged	ASTM E96-B	perms	160	200	200
Aged**	ASTM E96-B	perms	160	200	200

* Material complies with all relevant requirements of ICC-ES AC38 for compliance with the 2018, 2015, 2012, 2009, and 2006 IBC and IRC.

* Testing includes additional scrim layer thermally bonded to the membrane

** ASTM G154 Cycle 1 - 10 hour exposure

POLYPORE

For inquiries:
 Matthew Wolski, Director, Product Marketing
 Phone: +317-374-7005
 Email: Matt.Wolski@Polypore.Net

www.breathtechfilm.com